

SYMMETRY IN NATURE



- Symmetry is when a shape can be split into two matching halves

Here are some things in nature
which are very close to being symmetrical

Draw a line to split them into nearly two matching halves
(Some of them can be split in lots of different ways)



bird in flight



plant



leaf



butterfly



flower



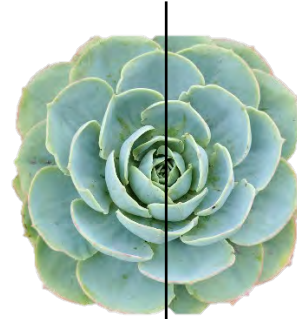
snowflake

SYMMETRY IN NATURE

Possible answers



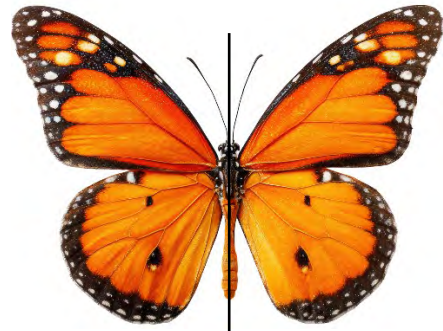
bird in flight



plant



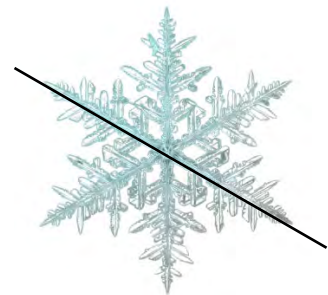
leaf



butterfly



flower



snowflake